



# THE INSTITUTE FOR at Viewpoint FACIAL ESTHETICS

467 Pennsylvania Avenue, Suite 108 • Fort Washington, Pennsylvania • 19034

## COURSE DATES

March 6, 2010  
June 5, 2010  
October 2, 2010  
Time: 9am to 4pm

Registration:  
8:30am

## FEATURING



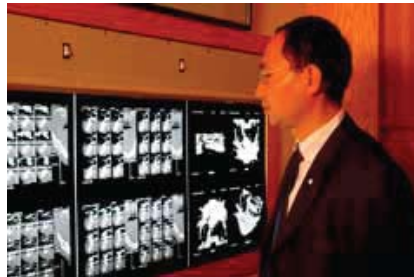
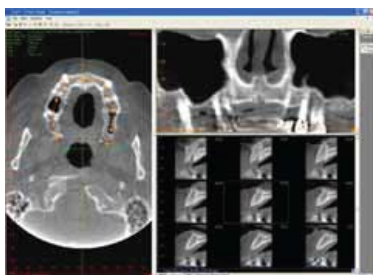
Jie Yang, DDS,  
MMedSc, MS, DMD

## DESCRIPTION OF COURSE

Cone-Beam CT (CBCT) has been widely used for dental implants and orthodontic treatment planning, TMJ assessment, orthognathic surgery, third molar extraction, sleep apnea study, and other oral and maxillofacial diagnoses. Unlike traditional intra-oral and extra-oral radiography, CBCT provides detail three-dimensional imaging not only in the traditional dental and maxillofacial region, but also in nasal cavities, paranasal sinuses, upper neck, Temporal bone, orbits, skull base, and cervical spine. Familiarity with anatomy and common pathology in these extended areas would help patients discover occult diseases (some of them could be life-threatening).

## EDUCATIONAL GOAL

Participants will have fundamental knowledge of CBCT anatomy, variation of normal anatomy, CBCT appearances of common pathology, as well as some incidental findings in the traditional dental and maxillofacial region, and its extended territories, such as, nasal cavities, paranasal sinuses, upper neck, skull base, and cervical spine. Participants will also be familiar with national and international guidelines for CBCT applications.



## EDUCATIONAL OBJECTIVES

1. CBCT anatomy and variation of normal anatomy of jaws, nasal cavities, paranasal sinuses, TMJ, Temporal bone, upper neck, skull base, and cervical spine will be demonstrated.
2. CBCT appearances of common pathology and incidental findings in the traditional dental and maxillofacial region as well as its extended head and neck territories will be described.
3. Comparisons of CBCT with traditional medical CT, MRI, and panoramic and cephalometric radiography in terms of radiation doses, advantages and disadvantages will be discussed.
4. National and international guidelines for CBCT applications and legal liability issues will be reviewed.

## EDUCATIONAL METHODS

This course utilizes:

1. Lectures
2. PowerPoint Slides and Videos
3. Clinical radiological conference and live interpretations

## COURSE INSTRUCTOR

Dr. Jie Yang is Professor and Director of Oral and Maxillofacial Radiology at Temple University Kornberg School of Dentistry. He is American Board Certified Oral and Maxillofacial Radiologist with a full clinical privilege at the Department of Radiology, Temple University Hospital.

Dr. Yang is currently the North American Regional Director and Board Member of the International Association of Dento-Maxillo-Facial Radiology (IADMFR). He was a Vice President and Co-Chair of Scientific Program Committee of the 16th Congress of IADMFR. He is the American Academy's Voting Representative to the American Dental Association's Standards Committee. Dr. Yang also served as the Chair of the American Academy of Oral and Maxillofacial Radiology's Position Paper Committee. Dr. Yang has more than 100 publications (38 peer-reviewed articles and 69 research abstracts). Many of them were published in prestigious dental and radiology journals, such as American Journal of Neuroradiology, Investigative Radiology, Radiology, Oral Surgery, Oral Medicine, Oral Pathology, Oral Radiology, and Endodontology (OOOOE), and DentoMaxilloFacial Radiology. He has supervised many international visiting scholars. They were from Belgium, Brazil, China, Egypt, Japan, and Pakistan. He is an editorial board member of OOOOE and reviewer of many professional dental and radiology journals.

Sponsored by  
The Institute For Facial Esthetics

TUITION: \$ 350.00

IFFE designates this activity for 6 hours continuing education credit.

IFFE is an ADA CERP Recognized Provider. ADA CERP is a service of the American Dental Association to assist dental professionals in identifying quality providers of continuing dental education. ADA CERP does not approve or endorse individual courses or instructors, nor does it imply acceptance of credit hours by boards of dentistry. Concerns or complaints about a CE provider may be directed to the provider or to ADA CERP at [www.ada.org/goto/cerp](http://www.ada.org/goto/cerp).

**ADA CERP**® Continuing Education  
Recognition Program

Visit our web site: <http://www.iffenet>

For More Information and Registration, contact Linda at 215-643-5881 or [atiffenet@pidentalcenter.com](mailto:atiffenet@pidentalcenter.com)

IFFE reserves the right to cancel the course at any time with no responsibility other than full refund of money paid to IFFE. No refunds for cancellations made within 48 hours of the course. Continuing education credit issued for participation in this CE activity may not apply towards license renewal in all States.